

OKANAGAN LAKE FORESHORE INVENTORY AND MAPPING

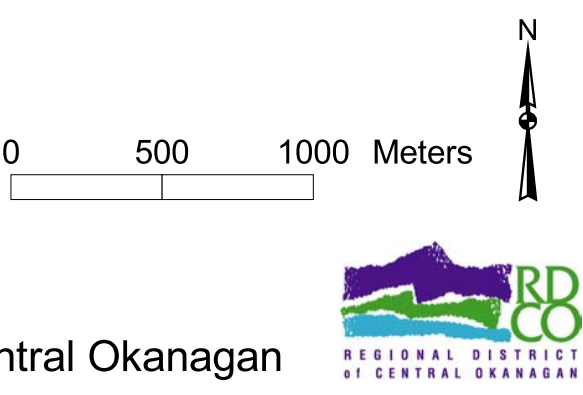
Appendix E: Summary Map 4 of Study Area

Map 4 of 4

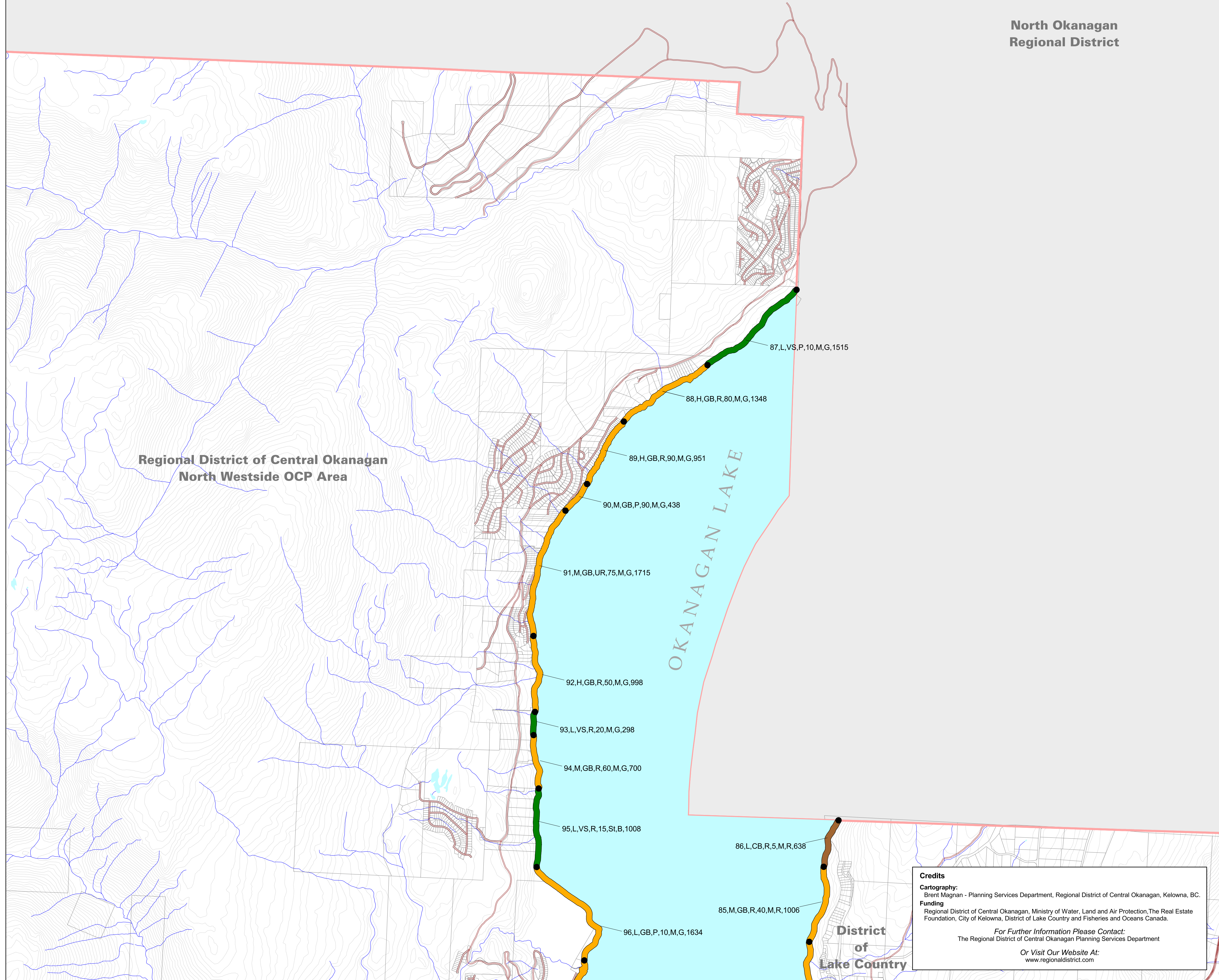
SCALE: 1:25 000

DATE: 2005/10/15

Regional District of Central Okanagan



North Okanagan Regional District



Dominant Shore Type

	Cliff/Bluff		Waterbody
	Gravel Beach		Administrative Boundary
	Low Rocky Shore		Roads
	Sand Beach		Cadastre
	Vegetated Shore		Watercourse
	Wetland		TRIM Contour
	Segment break		

Segment Number	Shore Type	Disturbance Level	Primary Land Use	Littoral Zone	Length (m)
1, M, CB, UR, 50, Sh, G, 1200					

Land Use

- UR - Urban / Residential
- Com - Commercial
- R - Rural
- Ag - Agriculture
- P - Park
- Ind - Industrial
- Ins - Institutional
- Con - Conservation
- CP - Crown Provincial

Dominant Substrate

- G - Gravel
- F - Fines
- C - Cobble
- B - Boulder
- R - Bedrock
- C/B - Cobble/Boulder (mix)

Littoral Zone Width

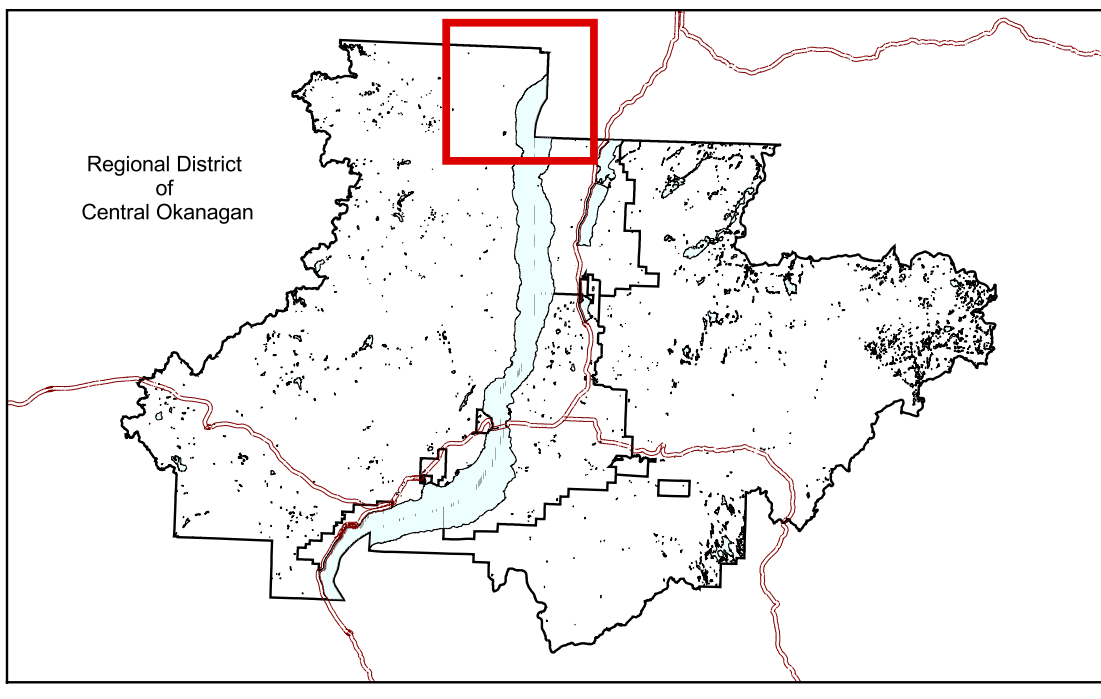
- St (Steep) - < 5 m
- M (Moderate) - 5 - 50 m
- Sh (Shallow) - 50 m +

Shore Type

- CB - Cliff Bluff
- GB - Gravel Beach
- SB - Sand Beach
- VS - Vegetated Shore
- LRS - Low Rocky Shore
- W - Wetland

Disturbance Level

- Low - No or limited signs of disturbance and foreshore impacts.
- Moderate - Moderate signs of disturbance and foreshore impacts.
- High - Extensive signs of disturbance and foreshore impacts.



Credits
 Cartography: Brent Magnan - Planning Services Department, Regional District of Central Okanagan, Kelowna, BC.
 Funding: Regional District of Central Okanagan, Ministry of Water, Land and Air Protection, The Real Estate Foundation, City of Kelowna, District of Lake Country and Fisheries and Oceans Canada.
 For Further Information Please Contact: The Regional District of Central Okanagan Planning Services Department
 Or Visit Our Website At: www.regionaldistrict.com

Cartographic Data Sources and Project Information
Projection Information
 Projection: UTM; Datum: NAD83; Spheroid: GRS80, Zone 11
Data Source Information
 Regional District Boundaries: CDMS - Crown Land Registry Services, 1999;
 Regional District Electoral Area, Municipal Boundaries and First Nations Reserve Boundaries: Regional District of Central Okanagan Cadastral Base - Regional District of Central Okanagan, 2002;
 Transportation Networks, Streams and Lakes: TRIM 2 - Land Data BC, 2001 and Regional District of Central Okanagan Sensitive Habitat Inventory and Mapping, 2004.
 This map is used for illustrative purposes only and should be used in conjunction with the Okanagan Lake Foreshore Inventory and Mapping Database.