

REGIONAL DISTRICT OF CENTRAL OKANAGAN

BYLAW NO. 671

---

Being a bylaw to convert the function of weed control to an extended service and to extend the boundaries for the service.

---

WHEREAS under Section 767(4) of the Municipal Act, a regional district exercising a power to provide a service other than a general service, may adopt a bylaw respecting that service which converts the service to one exercised under the authority of a bylaw establishing the service, and which:

- a) meets the requirements of Section 794 for a bylaw establishing the service, and
- b) is adopted in accordance with the requirements of Section 802 as if it were a bylaw amending a bylaw establishing a service;

AND WHEREAS the Regional Board of the Regional District of Central Okanagan was granted by way of Supplementary Letters Patent dated the 24th day of April, 1975, and amendments thereto, the function of weed control for the participating member municipalities, described as the City of Kelowna, the Corporation of the District of Peachland, Electoral Area A and defined portions of Electoral Areas G, H and I;

AND WHEREAS Electoral Area A has incorporated and is now known as the District of Lake Country, and Electoral Area H is now known as Electoral Area - Westbank;

AND WHEREAS the Regional Board of the Regional District of Central Okanagan wishes to convert the aforesaid function of weed control to an extended service;

AND WHEREAS the Regional Board of the Regional District of Central Okanagan deems it necessary to extend the boundaries of the defined portion of Electoral Area G so that all of Electoral Area G is included in the service area;

AND WHEREAS consent of 2/3 of the participants has been given, pursuant to Section 802(1)(b) of the Municipal Act.

NOW THEREFORE THE REGIONAL BOARD OF THE REGIONAL DISTRICT OF CENTRAL OKANAGAN IN OPEN MEETING ASSEMBLED ENACTS AS FOLLOWS:

1. The function of Weed Control granted by Supplementary Letters Patent dated the 24th day of April, 1975, as amended by further Supplementary Letters Patent, is hereby established as the extended service of weed control;
2. The boundaries of the defined portion of Electoral Area G are hereby extended to include the whole of the electoral area, for the purposes of this extended service;
3. The electoral participating areas in the extended service established under Section 1, are Electoral Area G and the defined portions of Electoral Area - Westbank and Electoral Area I as set out in Schedule A and Schedule B attached to and forming part of this bylaw, and the municipal participating areas are the Corporation of the District of Peachland, the District of Lake Country and the City of Kelowna;
4. The annual cost for the service provided under Section 1 shall be recovered by the requisition of money to be collected by a property value tax to be levied and collected upon land and improvements within the participating areas under sections 810(1) and 810.1(1) of the Municipal Act;

- 5. The cost of providing the services shall be apportioned among the participating areas on the basis of the converted values of land and improvements in those areas;
- 6. This bylaw may be cited as "The Regional District of Central Okanagan Weed Control Extended Service Establishment and Boundary Extension Bylaw No. 671 , 1996.

READ A FIRST TIME THIS 13th DAY OF May, 1996.  
 READ A SECOND TIME THIS 13th DAY OF May, 1996.  
 READ A THIRD TIME THIS 13th DAY OF May, 1996.

Approved by the Inspector of Municipalities this 21st day of June, 1996.

RECONSIDERED AND ADOPTED THIS 8th DAY OF July, 1996.



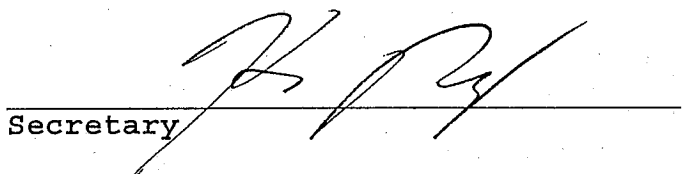
CHAIRPERSON



SECRETARY

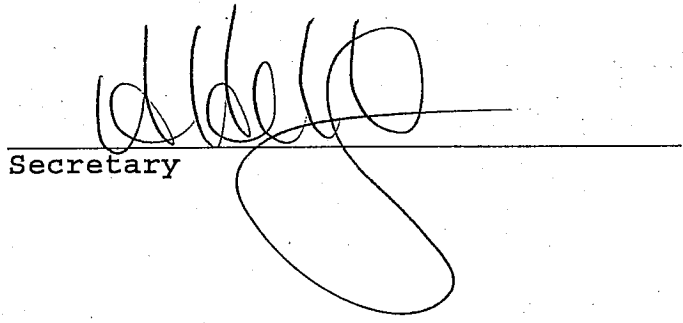
I hereby certify the foregoing to be a true and correct copy of Bylaw No. 671 cited as the "Regional District of Central Okanagan Weed Control Extended Service Establishment and Boundary Extension Bylaw No. 671 , 1996" as read a third time by the Regional Board on the 13th day of May , 1996.

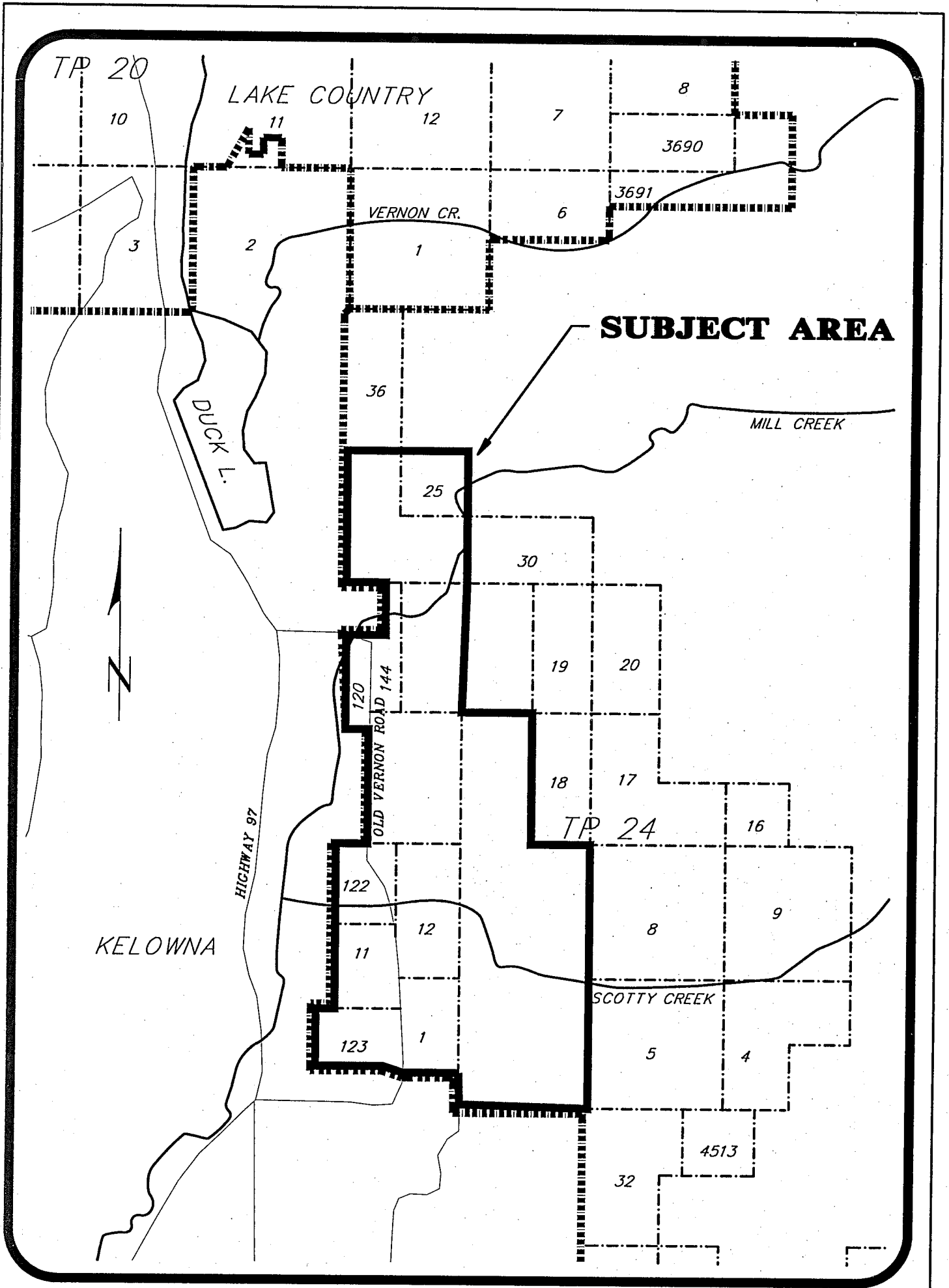
Dated at Kelowna, B.C. this 16th day of May , 1996.

  
 Secretary

I hereby certify the foregoing to be a true and correct copy of Bylaw No. 671 cited as the "Regional District of Central Okanagan Weed Control Extended Service Establishment and Boundary Extension Bylaw No. 671 , 1996" as adopted by the Regional Board on the 8th day of July , 1996.

Dated at Kelowna, B.C. this 10th day of July , 1996.

  
 Secretary



**SUBJECT AREA**

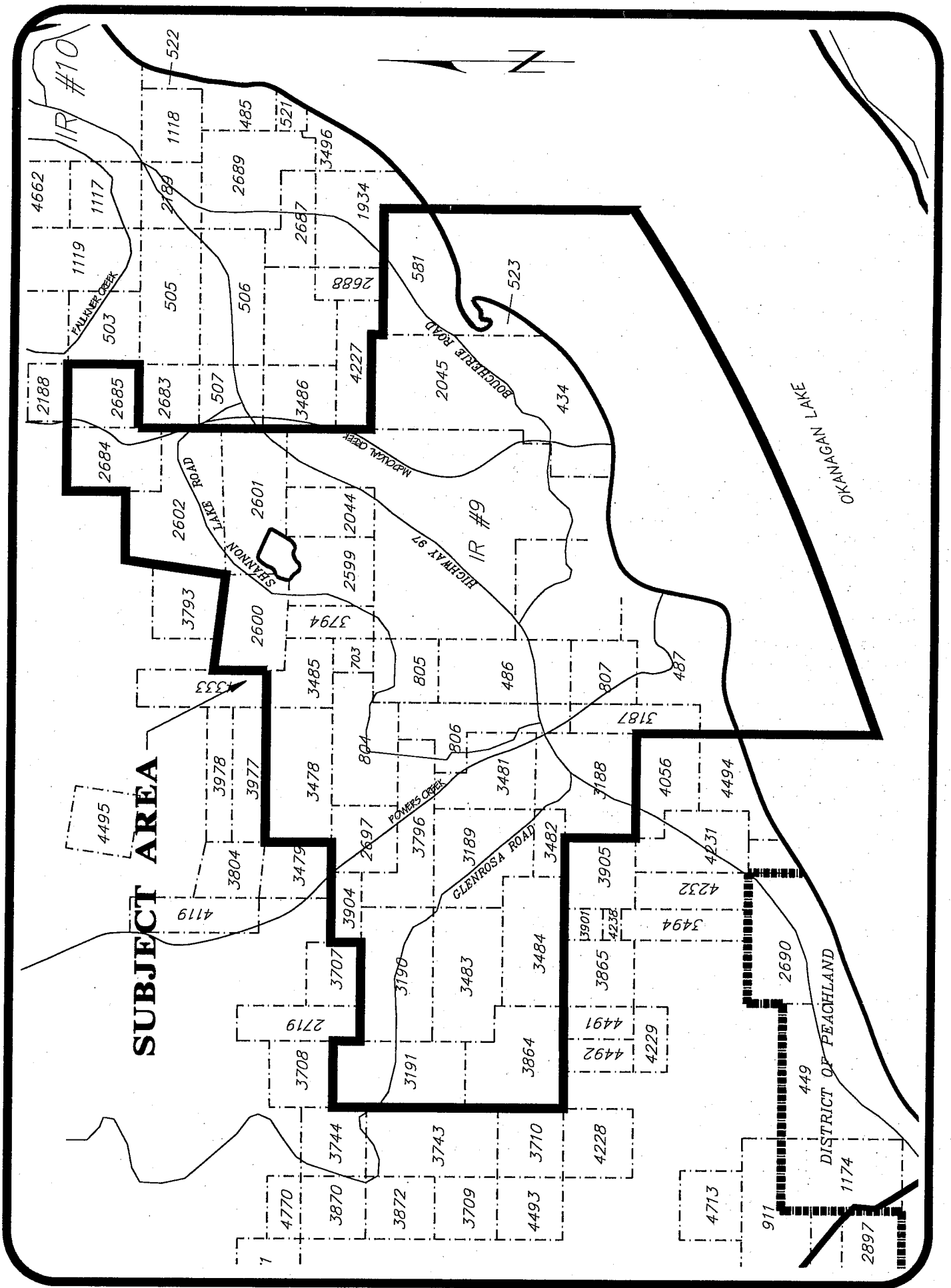


REGIONAL DISTRICT of CENTRAL OKANAGAN  
 WEED CONTROL EXTENDED SERVICE ESTABLISHMENT  
 AND BOUNDARY EXTENSION BYLAW No. 671, 1996  
 SCHEDULE "B" – DEFINED AREA OF ELECTORAL AREA 'I'

REVISIONS :

DATE	BYLAW NO.	DATE	BYLAW NO.

SCALE : NTS  
 FILENAME : LSA-WEED.DWG  
 DATE OF ADOPTION : JULY 8, 1996.



REGIONAL DISTRICT of CENTRAL OKANAGAN  
 WEED CONTROL EXTENDED SERVICE ESTABLISHMENT  
 AND BOUNDARY EXTENSION BYLAW No. 671, 1996

SCHEDULE "A" - DEFINED AREA OF ELECTORAL AREA - WESTBANK

REVISIONS :

DATE	BYLAW NO.	DATE	BYLAW NO.

SCALE : NTS

FILENAME : LSA-WEED.DWG

DATE OF ADOPTION : July 8, 1996