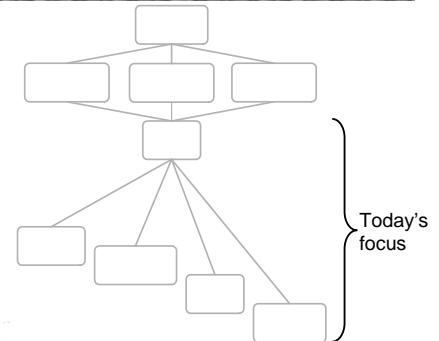


Regional Solid Waste Management Plan Review: *Engaging solutions for tomorrow*

Garbage School 301:
Introduction

What are we talking about today?



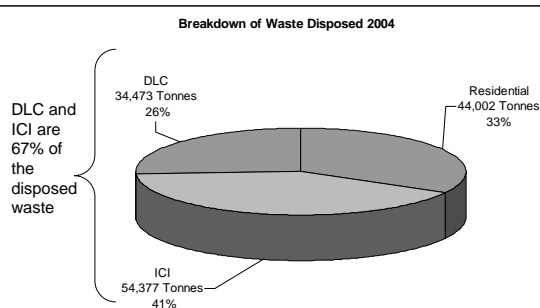
How do they fit together?

- Policy options set the stage for action
- Recycling makes materials available to industry for re-use
- Composting recovers organic matter
- Waste to energy recovers some energy that went into the original production
- Landfilling disposes of the remainder

Waste Streams

- Residential/Household
 - Collection provided by local government
- Institutional, Commercial, Industrial (ICI)
 - Includes schools, hospitals, businesses, light industry
 - Also often includes Multi-Family Units (MFU)
- Demolition, Land-clearing, Construction (DLC)
 - Also includes waste from renovations

Waste Breakdown



Disposal Trends

- From 1990-2000, there was a 47% reduction in per capita disposal
- But since 2000, rates have increased:

Residential Waste	16%
ICI Waste	16%
DLC Waste	<u>60%</u>
Overall Increase	27%

Who's Responsible for Waste?

- Local governments
 - Collect from residents
 - Process recyclables and organics from residents
 - Dispose from all streams
- Private companies
 - Collect from apartments, ICI, DLC generators
 - Process recyclables and organics from apartments, ICI and DLC



Waste Minimization

- Includes waste prevention, source reduction, recycling
- Why minimize?
 - Lower end costs
 - Fewer greenhouse gas emissions
 - Local economic benefits
 - Improved product design
 - Energy and resource savings
 - Reduced environmental impact



Treatment and Disposal

- Treatment: processes applied to waste prior to disposal
 - May reduce the volume, mass and or level of hazard
 - Examples: Recycling, composting, incineration
- Disposal: the placement of waste in a facility without the intention of retrieval
 - Example: Landfill



Why treat waste?

- Human health concerns
 - Reduce diseases
 - Protect drinking water
- Protection of the environment
 - Reduce surface and groundwater contamination
- As population density increases, treatment and disposal become more critical



What do we want to achieve?

- Isolate waste from the environment
 - Separate wastes from humans and the environment
 - Reduce long term liability
- Timeliness
 - Implement as soon as possible
- Cost effectiveness
 - Systems must be affordable and sustainable



Where are we starting from?

- Dump waste away from settlement
- Begin to contain waste
- Totally contain waste and start monitoring environment
- Include recycling and treatment prior to disposal
- Minimize amount of waste requiring treatment, recycling, and disposal



Today's Discussion

4:15 - 5:00	Waste to Energy
5:00 - 5:45	Policy Options
5:45 - 6:30	Landfilling
6:30 - 7:15	Composting
7:15 - 8:00	Recycling

