



# ***Westside Landfill Closure Plan Update***

***RDCO Governance & Services Committee***

***October 9, 2008***

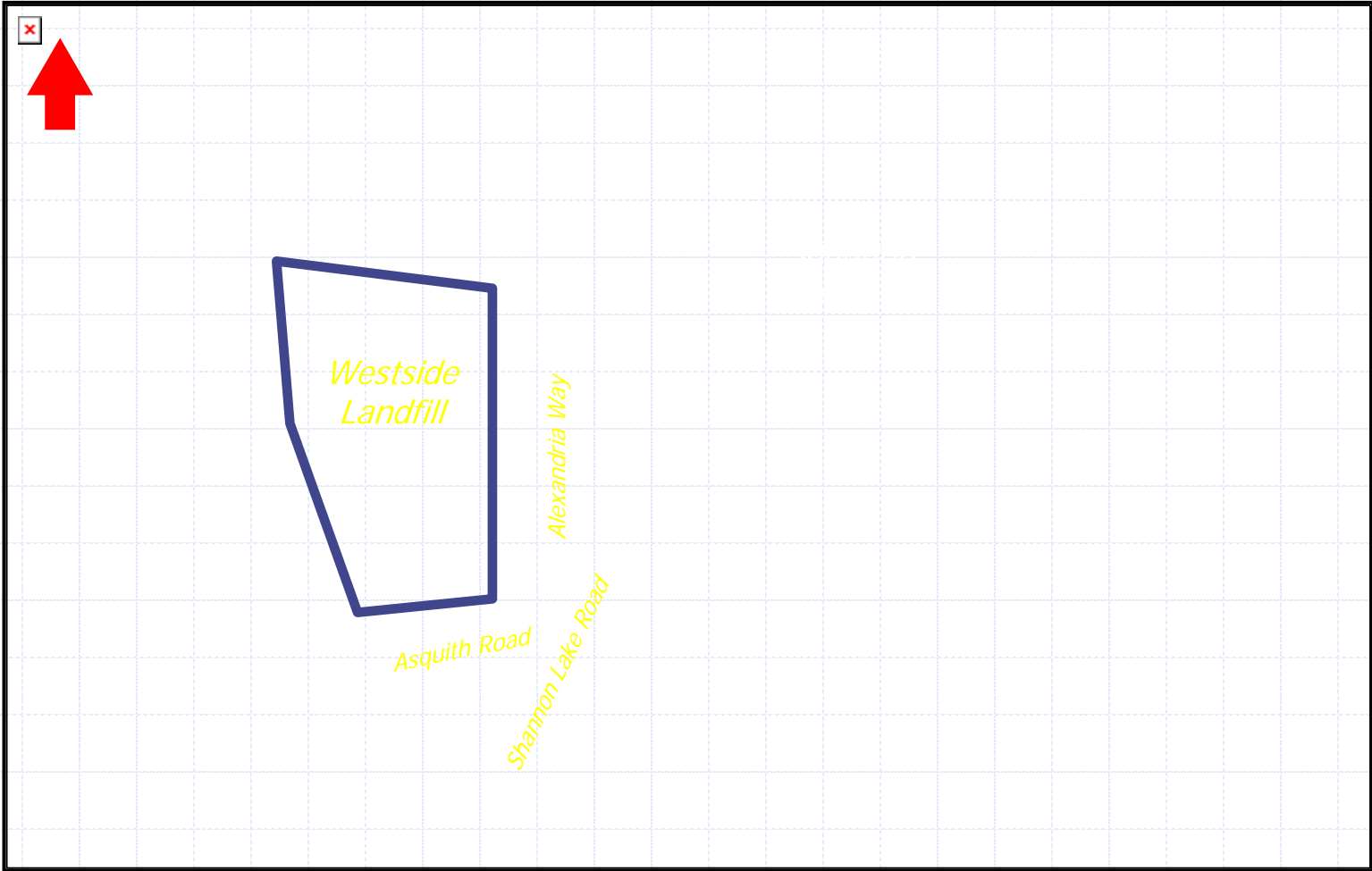
# Presentation Overview

- Background
- Existing Closure Plan
- Closure Requirements
- Conceptual Closure Plan

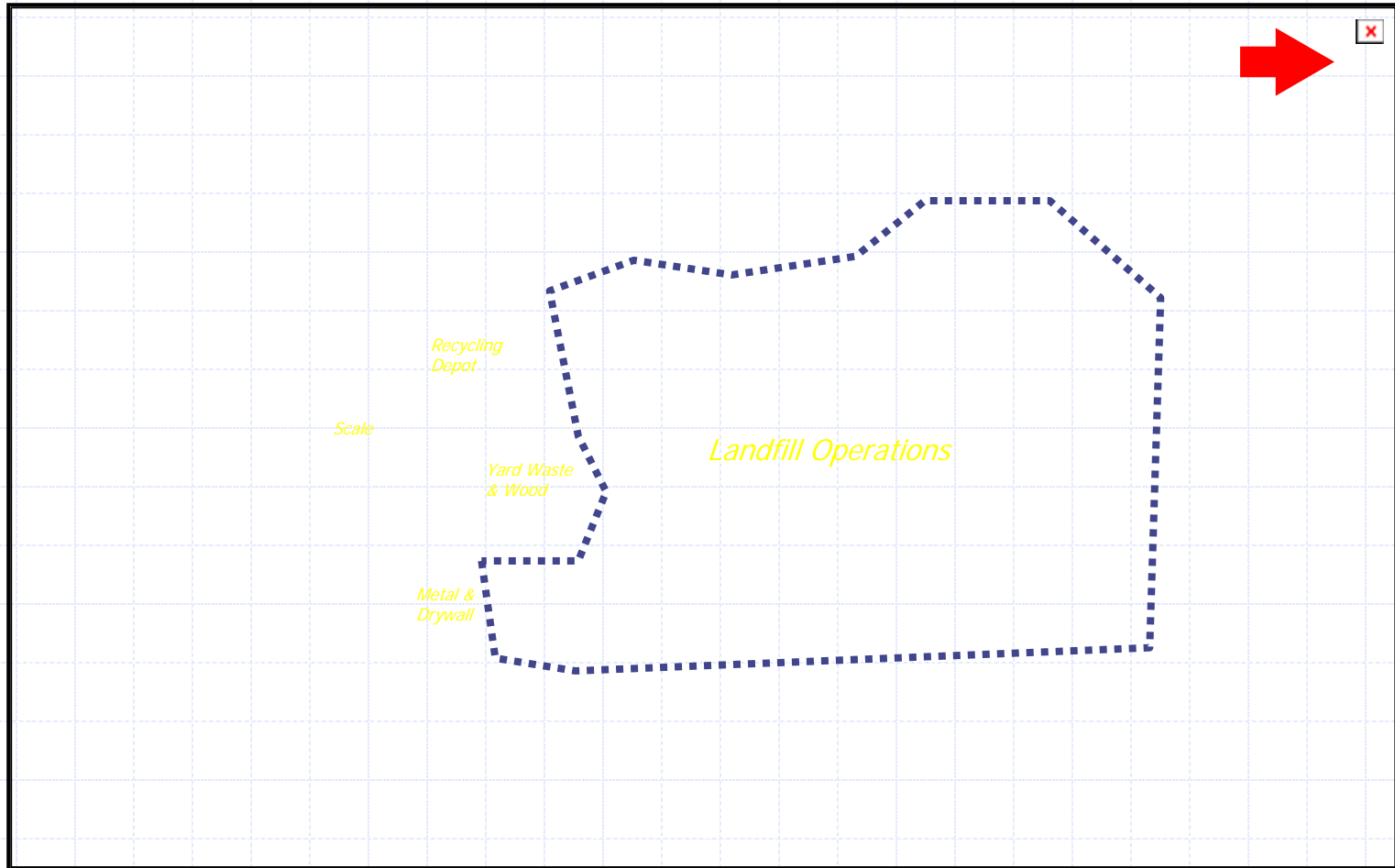
# Background Information

- Westside Landfill has been in operation since the 1960's.
- the site currently serves residents and businesses in Peachland, Westside, Westbank First Nations, and RDCO West.
- 7,100 tonnes of residential waste and 18,100 tonnes of commercial waste disposed of in the landfill during 2007.
- 8,500 tonnes diverted through site recycling programs in 2007.
- 76,200 tonnes of clean fill accepted in 2007.

# Site Location



# Site Layout



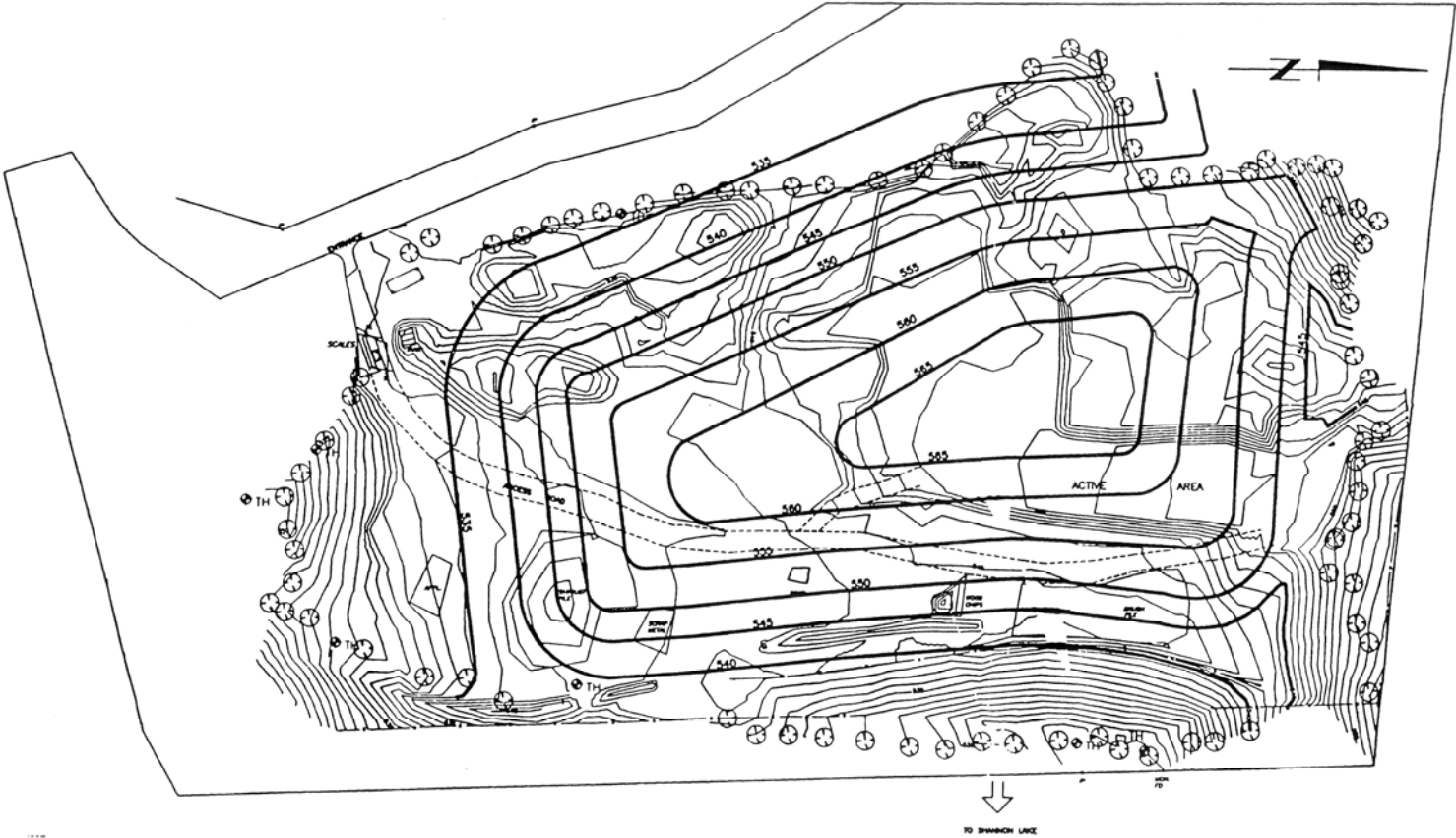
# Remaining Capacity

- capacity determined by remaining “airspace” and waste generation rate.
- it is estimated that the remaining airspace currently available will be consumed by 2010.
- more refined capacity calculations are being completed based on a recent topographical survey.

# “Existing” Closure Plan

- current closure plan developed in 1993.
- finished site contours developed based on slope stability, drainage, and property line setbacks.
- side slopes based on 4:1 and top slopes at 4%.
- landfill gas management not outlined.
- Passive recreational usage recommended (e.g. picnic area, playground).
- included construction of a recycling depot and transfer station after the landfill is full.

# Finished Contour Plan



# MOE Requirements

- primary criteria are outlined in BCMOE's "*Landfill Criteria for Municipal Solid Waste*".
- cap consisting of 1 m thick "barrier" layer covered by a 0.15 m topsoil layer and approved vegetation
- landfill side slopes less than 33% prevent erosion.
- performance requirements for landfill gas onsite and at the property line.
- post-closure monitoring for a minimum of 25 years.
- limits on buildings and structures recommended.
- covenant on land title.

# Local Objectives

- Westside OCP
  - provision of interconnected parks and open spaces
  - protection of sensitive ecosystems
  - voluntary habitat conservation/restoration
  - use of native vegetation during reclamation
- Westside Parks and Recreation Master Plan
  - landfill designated for passive community use
  - serve Shannon Lake and Smith Creek areas
- Solid Waste Master Plan
  - expansion of recycling opportunities and yard waste capture

# Conceptual Closure Plan

- Conceptual Closure Plan is being developed by working group that includes RDCO and consulting staff.
- Closure Plan is currently at a draft stage.
- proposed end use is as a low-maintenance community or regional park.
- slopes and vegetation intended to mimic natural grasslands on slopes of Okanagan Valley.
- native shrubs dispersed in pockets to break up open spaces and provide visual screens to post-closure infrastructure.
- network of gravel walking trails leading to viewpoints overlooking Shannon Lake and Okanagan Lake.
- Non-obtrusive interpretive displays highlighting landfill reclamation and habitat restoration activities.

# Broader Considerations

- Closure of landfill to commercial traffic in 2009 may result in higher waste disposal costs for businesses on west side of Lake Okanagan.
- Convenient access to disposal services for residential customers will be eliminated.
- Closure of Westside Landfill will impact traffic at Glenmore Landfill. Should be done in stages to avoid congestion at that site.
- Increased traffic through Glenmore area communities may be offset by construction of East-West Connector Road.
- Glenmore Landfill's capacity determined based on inclusion of Westside Landfill tonnages after 2012. No immediate "landfill crisis".

# Next Steps

- complete proposed contour plan and drainage plans (Fall 2008)
- public and stakeholder input on conceptual closure plan (Fall 2008)
- finalization of closure planning and design of systems (Winter 2008/2009)
- beginning of staged diversion of waste to Glenmore (Spring 2009)
- site closure (2010/2011)