



## **EMERGENCY OPERATIONS CENTRE**

# **EVACUATION ORDER**

July 22, 2009  
11:40 am

The Regional District of Central Okanagan has been advised of the imminent danger of wildland fire to the life and property of persons resident or present in the Fintry High Farm area. Many of the properties do not have street addresses, but the properties affected are as noted by the following legal descriptions: District Lots 5016, 4023, 4691, 4692, 4002, 4693, 3333, 3803, 4700, 4032.

A map is attached for additional clarification.


Based on this information, an order pursuant to the Emergency Program Act to evacuate these areas has been authorized in the interest of life safety at 11:40 am hours.

Other agencies will be expediting this action in these areas on behalf of the Authority issuing this Order as first cited above.

### **FOLLOW THE TRAVEL ROUTE PROVIDED AND REGISTER AT:**

Mount Boucherie Senior Secondary  
2751 Cameron Rd.

**YOU MUST LEAVE THIS AREA IMMEDIATELY**

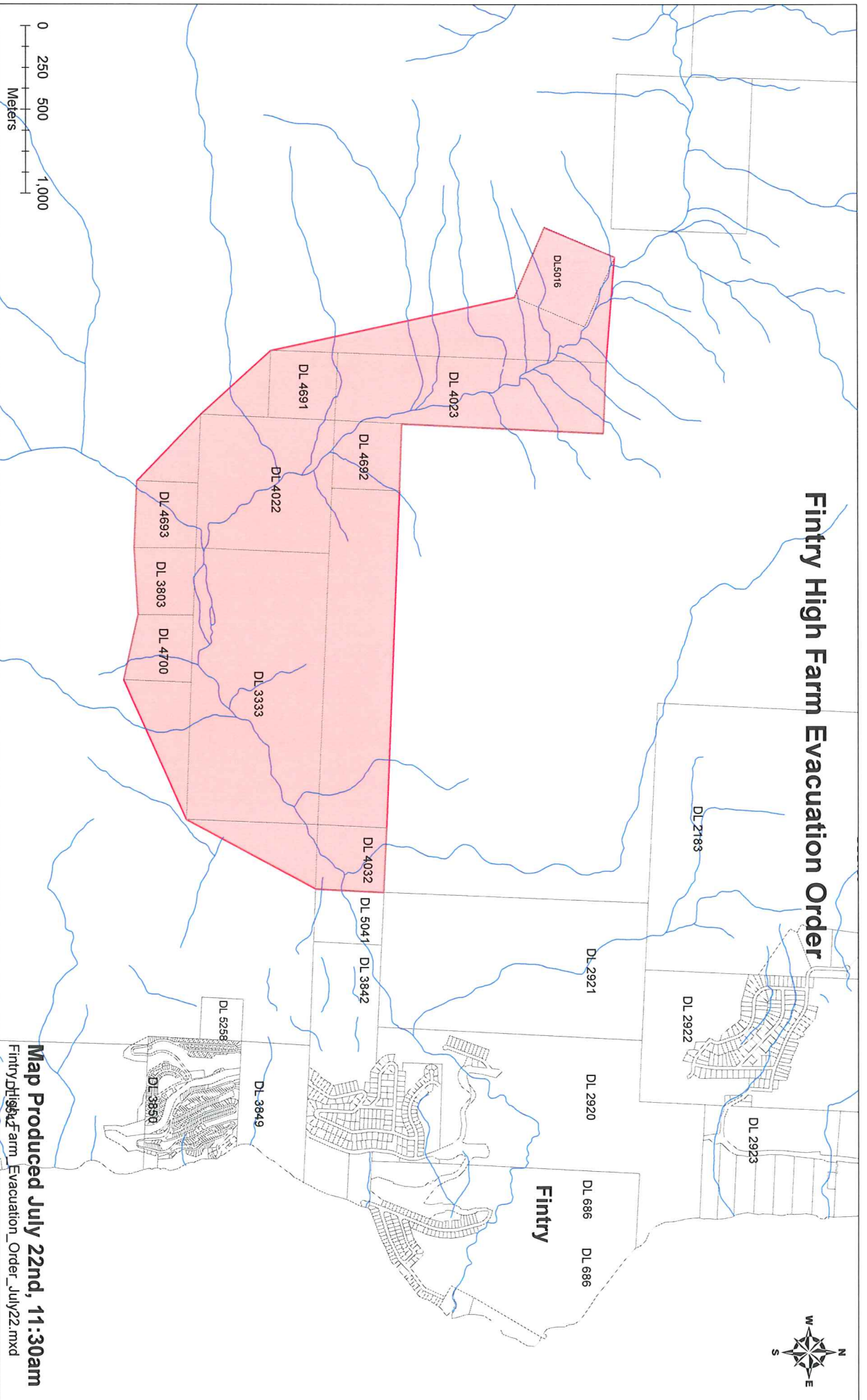


Harold Reay  
Director, Regional District of Central Okanagan  
Emergency Operations Centre

Emergency Operations Centre

**RECEPTION CENTRE LOCATION(S)**  
**Mount Boucherie Senior Secondary**  
**2751 Cameron Rd.**

# Fintry High Farm Evacuation Order



Map Produced July 22nd, 11:30am  
Fintry High Farm Evacuation Order July 22.mxd