

OKANAGAN LAKE FORESHORE INVENTORY AND MAPPING

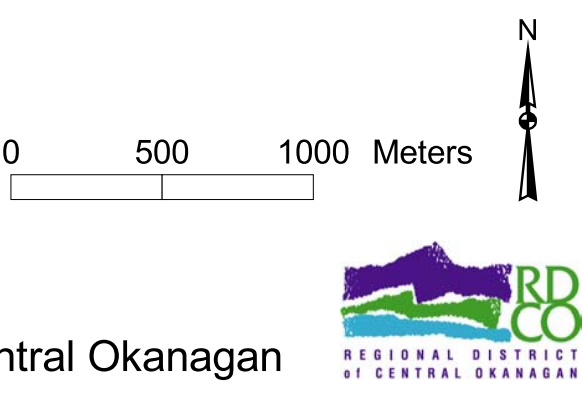
Appendix E: Summary Map 4 of Study Area

Map 4 of 4

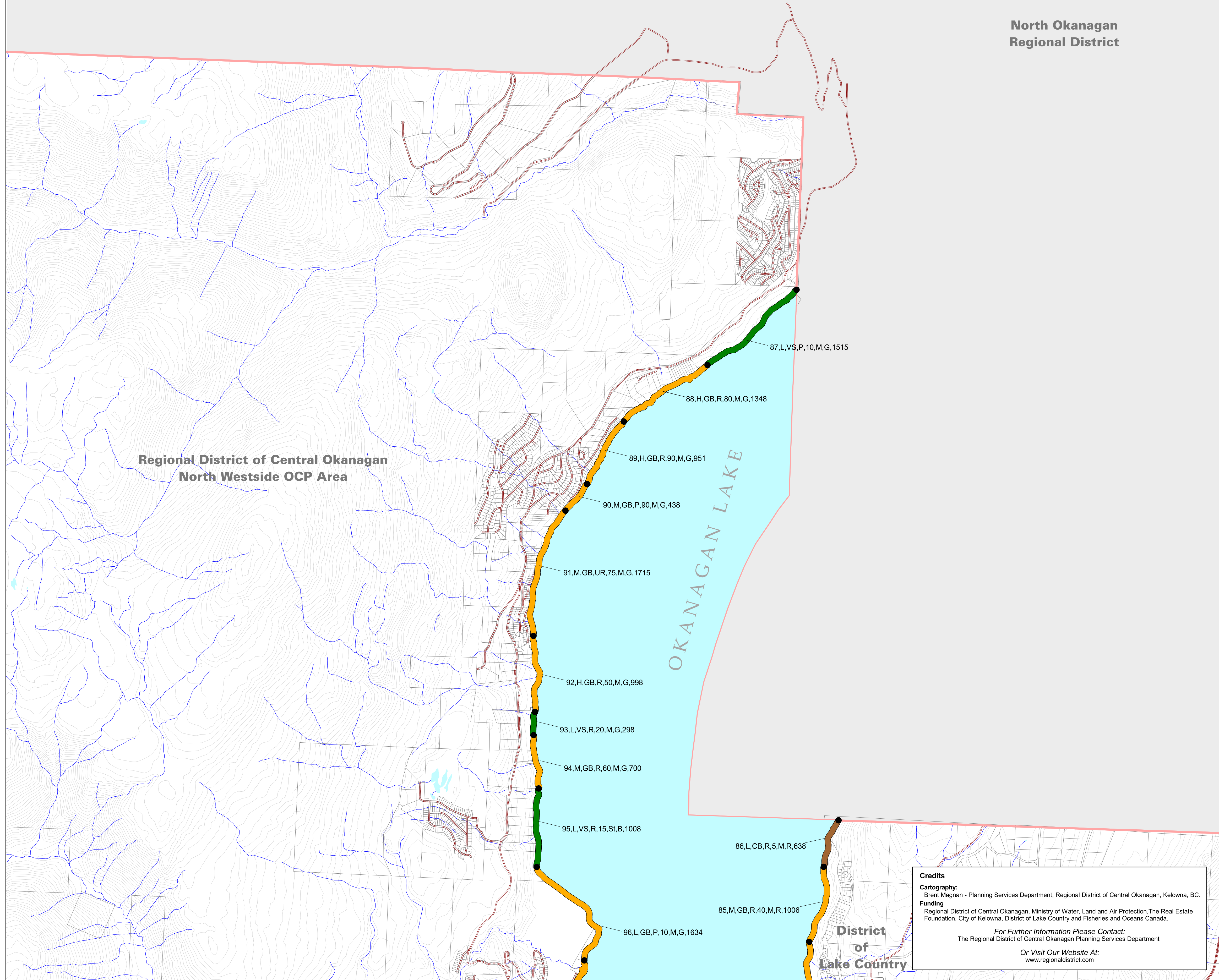
SCALE: 1:25 000

DATE: 2005/10/15

Regional District of Central Okanagan



North Okanagan Regional District



Regional District of Central Okanagan
North Westside OCP Area

OKANAGAN LAKE

District of Lake Country

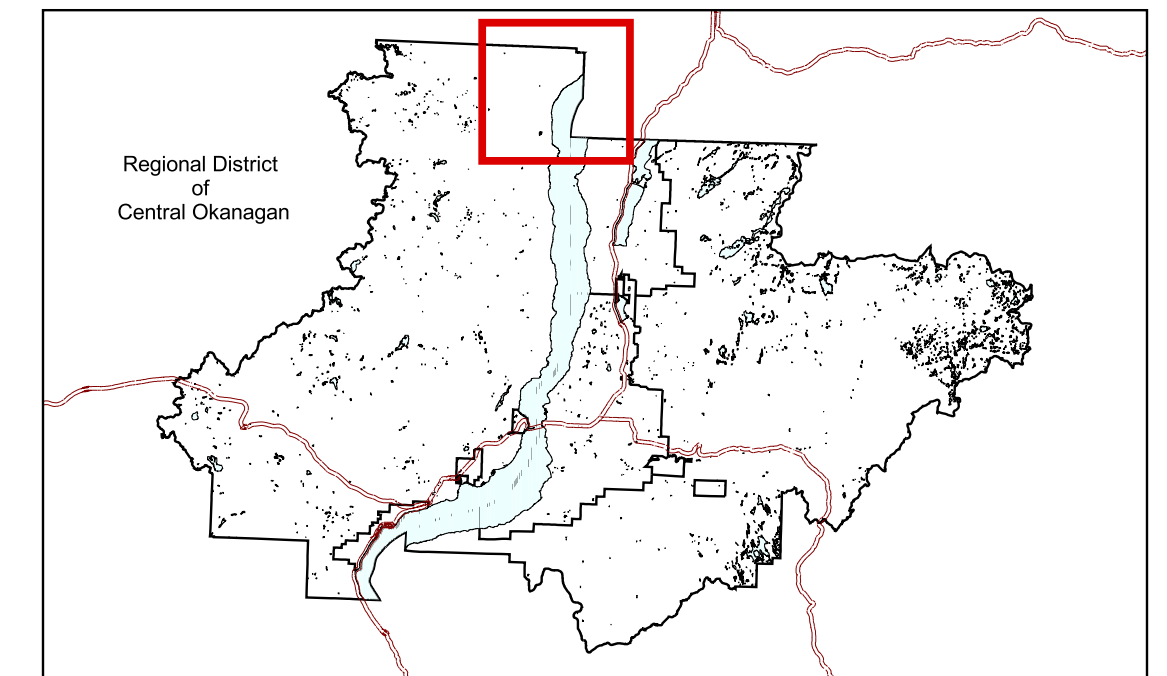
- Dominant Shore Type**
- Cliff/Bluff
 - Gravel Beach
 - Low Rocky Shore
 - Sand Beach
 - Vegetated Shore
 - Wetland
 - Segment break
 - Waterbody
 - Administrative Boundary
 - Roads
 - Cadastre
 - Watercourse
 - TRIM Contour

Segment Number	Shore Type	Disturbance Level	Primary Land Use	Littoral Zone	Length (m)
1, M, CB, UR, 50, Sh, G, 1200					

- Land Use**
- UR - Urban / Residential
 - Com - Commercial
 - R - Rural
 - Ag - Agriculture
 - P - Park
 - Ind - Industrial
 - Ins - Institutional
 - Con - Conservation
 - CP - Crown Provincial
- Dominant Substrate**
- G - Gravel
 - F - Fines
 - C - Cobble
 - B - Boulder
 - R - Bedrock
 - C/B - Cobble/Boulder (mix)
- Littoral Zone Width**
- St (Steep) - < 5 m
 - M (Moderate) - 5 - 50 m
 - Sh (Shallow) - 50 m +
- Shore Type**
- CB - Cliff Bluff
 - GB - Gravel Beach
 - SB - Sand Beach
 - VS - Vegetated Shore
 - LRS - Low Rocky Shore
 - W - Wetland

Disturbance Level

Low - No or limited signs of disturbance and foreshore impacts.
 Moderate - Moderate signs of disturbance and foreshore impacts.
 High - Extensive signs of disturbance and foreshore impacts.



Credits

Cartography:
Brent Magnan - Planning Services Department, Regional District of Central Okanagan, Kelowna, BC.

Funding
Regional District of Central Okanagan, Ministry of Water, Land and Air Protection, The Real Estate Foundation, City of Kelowna, District of Lake Country and Fisheries and Oceans Canada.

For Further Information Please Contact:
The Regional District of Central Okanagan Planning Services Department

Or Visit Our Website At:
www.regionaldistrict.com

Cartographic Data Sources and Project Information

Projection Information
Projection: UTM; Datum: NAD83; Spheroid: GRS80, Zone 11

Data Source Information
Regional District Boundaries: CDMS - Crown Land Registry Services, 1999;
Regional District Electoral Area, Municipal Boundaries and First Nations Reserve Boundaries:
Regional District of Central Okanagan Cadastral Base - Regional District of Central Okanagan, 2002;
Transportation Networks, Streams and Lakes: TRIM 2 - Land Data BC, 2001 and Regional District of Central Okanagan Sensitive Habitat Inventory and Mapping, 2004.

This map is used for illustrative purposes only and should be used in conjunction with the Okanagan Lake Foreshore Inventory and Mapping Database.