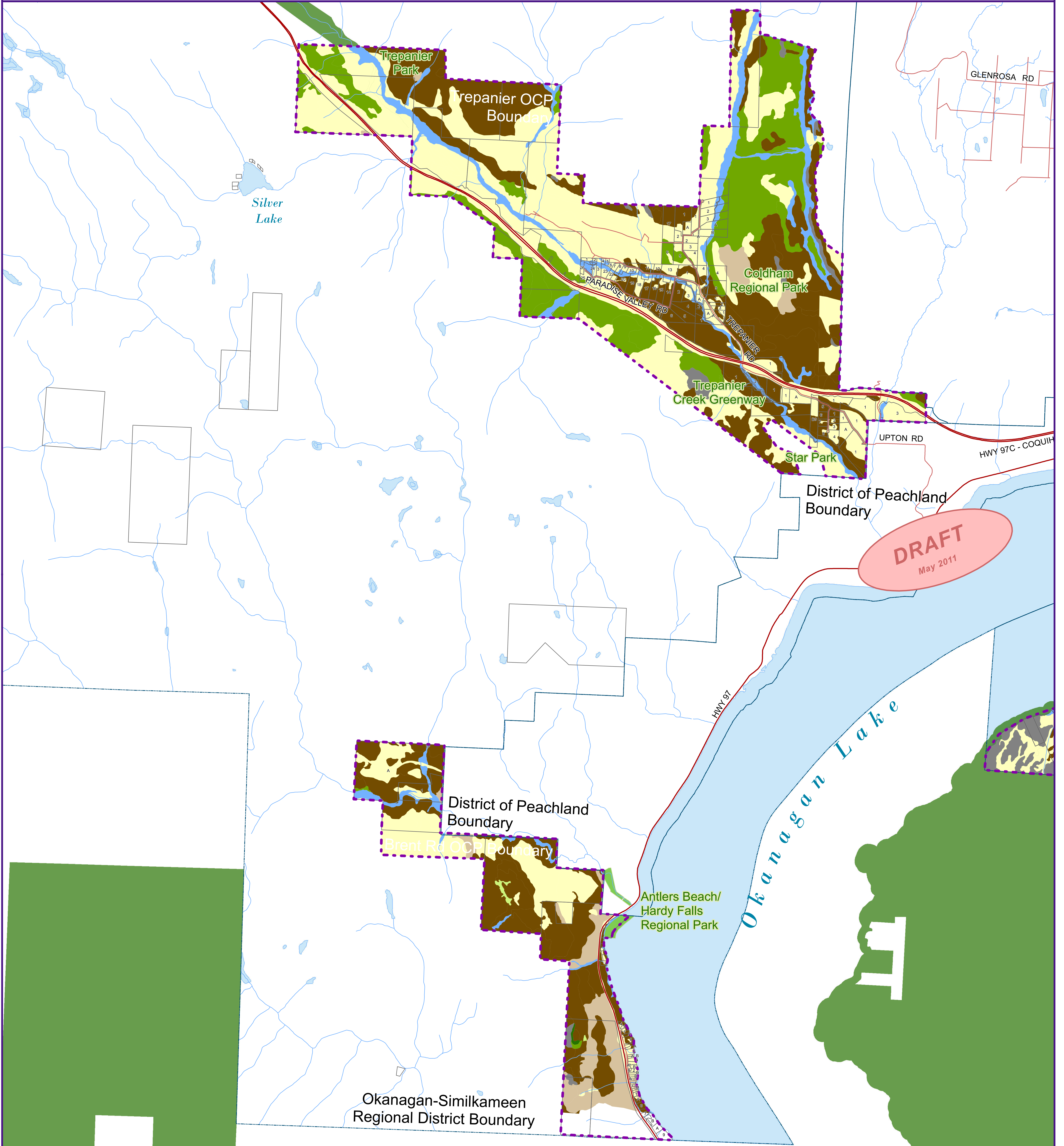
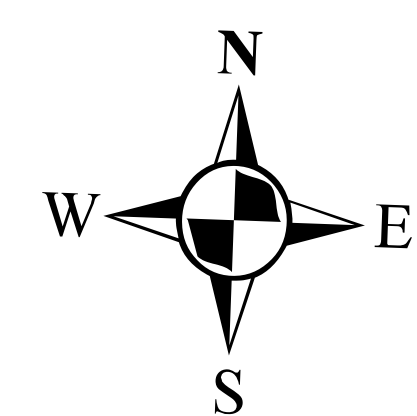
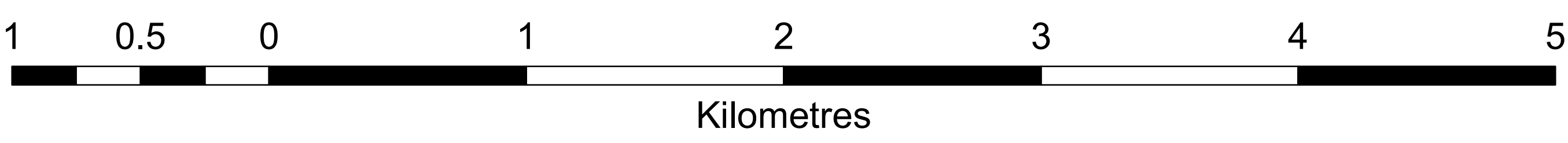


# Brent Road & Trepanier Sensitive Ecosystem Inventory (SEI)



- |                     |                              |                          |                      |
|---------------------|------------------------------|--------------------------|----------------------|
| ▲ PermitSG_Quarries | ⋯ Brent & Trepanier Boundary | <b>SEI Primary Class</b> | ■ Old Forest         |
| — Highway           | □ RDCO Area Boundaries       | ■ Broadleaf Woodland     | ■ Riparian           |
| — Street            | □ Cadastral Parcels          | ■ Grassland              | ■ Sparsely Vegetated |
| — Streams           | ⋯ Crown Tenure               | ■ Mature Forest          | ■ Woodland           |
| ■ Lakes and Ponds   |                              | ■ Not Sensitive          | ■ Wetland            |



Brent Road & Trepanier Official  
Community Plan  
Schedule 'A'  
Bylaw No. xxxx Adopted. xxx



Note:  
This map has been consolidated for office purposes and includes information that is not part of the official Future Land Use map. The District / Municipality makes no representation regarding the accuracy of this map and users are advised to refer to an updated, accurate copy of the Future Land Use map as required.

Latest Amending Bylaw # xxxx-xx

Consolidated to (date)